



MASSEY UNIVERSITY
COLLEGE OF HUMANITIES
AND SOCIAL SCIENCES
TE KURA PŪKENGĀ TANGATA



Psychology News @MASSEY

School of Psychology, Te Kura Hinengaro Tangata

June / July 2009

Vol. 4, No. 3

The School of Psychology at Massey University is situated on three campuses, Albany in Auckland, Turitea in Palmerston North, and Wellington. This newsletter is issued bi-monthly and captures what's been happening and what's coming up in the School of Psychology at Massey University.

Active Links

If you are reading this newsletter on your computer the links can be clicked to access the listed webpages. Previous issues of *Psychology News* can be found at: <http://psychology.massey.ac.nz/news/psych-news.htm>

Significant Events

Australasian Faculty of Rehabilitation Medicine/National Institute of Rehabilitation Research / New Zealand Rehabilitation Association combined conference

Our School was strongly represented at the Australasian Faculty of Rehabilitation Medicine / National Institute of Rehabilitation Research / New Zealand Rehabilitation Association combined conference last week. Presentations were given by Wellington campus graduate students Mark Lewis, Jackki Yim and Phil Howard, as well as Duncan Babbage who presented twice - once on behalf of Angela Biszak – and Joan Norrie from Palmerston North.

Te Waka Rangahau Hinengaro presented by Te Puawaitanga in the School of Psychology at Massey University, Albany July 2009. The theme “Voices from the field.”

Māori psychology students, Massey University; staff, practitioners and potential students gathered at the Albany



campus. During the day, key note speakers from Auckland and Wellington conversed about their roles and experiences (rousing presentations).

Collectively presenters provided handy hints, pathways and direction for working in the psychology field. They also talked about responsibilities being Māori, and once Māori have dual competency clinically and culturally e.g. "walk the talk." Or said another way, Māori are able to manage and dance with tensions and considerations.

Karakia and incantation was facilitated by Pereme Porter (Kaumatua, School of Psychology, Massey, Albany) who reflected upon Mata ariki, Io and the ecosystems. His korero provoked some individual reflection and spiritual enlightenment.

Our first presentation, a group of five, from the Kari Centre, Cultural Kai Mahi Pat Mendies, Michael Perenara, Anaru Roberts, and Clinical Psychologists Intern Karmyn Billing, Auckland University and Pania Thompson, Graduate Massey University conversed about service delivery and best work practice clinically and culturally. The Kari Centre Youth Early Intervention Service is a small specialty service seeing children and adolescents who may be experiencing a first episode of Psychosis, Bipolar Affective Disorder (aka Manic Depression or Bipolar Disorder) or Obsessive Compulsive Disorder and who requires intensive specialist input.

Clive Banks (Clinical Psychologist – Graduate Massey University) was our second presenter who is employed by Rangatāua Mauriora Tu te Wehi Primary Mental Health Service, Porirua. Their service endeavours to provide culturally appropriate mental health services for all people. Clive reminisced about his journey / pathway to study and beyond. He shared about working with individuals & whānau / families experiencing mild to moderate mental health difficulties. He was inspiring in terms of remembering insider knowledge and handy hints for students.

The afternoon presentation was Tania Cargo (Clinical Psychologist – Graduate Auckland University) who was inspiring in terms of remembering attachment and Whānau. She used a voice of a Whānau and as a clinical psychologist what questions one could look at clinically and culturally. Tania's clinical work has been with both adults and children in hospital, community and educational settings.

After a brief break, a conversation about pathways of study was facilitated and answered by Dr Leigh Coombes, Massey University, Palmerston North and Erika Te Hiwi, Doctoral student, Massey University, Palmerston North.



Clive Banks



Tania Cargo

Massey boggles young minds

By MICHELLE DUFF - Manawatu Standard (Last updated 13:00 06/08/2009)

Some were there to check out robotic engineering, some considered careers in human nutrition and others were just stoked to score a free hat.

A throng of potential students swarmed across Massey University's Turitea campus yesterday, for one of the biggest open days in the tertiary institution's history.

More than 2000 secondary school students from Taranaki to Gisborne walked wide-eyed from science displays to humanities lecture rooms during the taster of university life.....

The School of Psychology had a polygraph or lie detector for friends to hook each other up to, and visitors to the School of Engineering watched a robot soccer match.

Open days will be held at the Wellington campus on August 28 and at the Albany campus on September 12.

The full article can be found at the following link: <http://www.stuff.co.nz/manawatu-standard/news/2725606/Massey-boggles-young-minds>

The NZ Psychological Society Annual Conference 2009

Conflict...Process...Resolution
Pāpa...Mahi...Ratanga

Thursday 27 - Sunday 30 August

The Palmerston North Convention Centre, [Palmerston North](#)

The theme reflects the broad spectrum of psychology's role, as it meets the many challenges posed for our profession in a changing world within both national and international contexts. It reflects emerging themes around our obligations to research and practice within ethical and socially responsible boundaries.

We look forward to the sharing, stimulation, collegiality and discovery communicated across the many sectors of our psychology workforce as it strives to make a difference in a changing world.

- Keynote speakers: [John Briere](#), [Kerry Chamberlain](#), [Michael Corballis](#), [Catherine Love](#) & [Moe Milne](#), [Ralph Serin](#), [Tim McCreanor](#)
- Invited guest speakers: [Werner Naef](#), [Tim Williams](#), [Janet Leathem](#)
- Three days of cutting-edge research papers, rapid communication posters and compelling symposia
- Several, half and full day stimulating and interactive [workshops](#)
- Fantastic opportunities to network with friends and colleagues



For further information on the conference please go to http://www.psychology.org.nz/Annual_Conference_page



[Conference Fees](#) - The registration brochure will be available in June 2009

Conference Accommodation

There are many hotels, motels and apartments in close proximity to the venue. The Convention Centre is located just a few metres from the Square, a beautiful inner city park, and is surrounded by cafes, restaurants and shops. Our preferred accommodation supplier is the [Kingsgate Hotel](#) who have offered preferential rates for conference delegates. For all other accommodation needs [Destination Manawatu](#) offers a free accommodation booking service and will advise you of room availability. Please contact Hilary Rossiter on +64 6 3501922 or email hilary@manawatunz.co.nz

Sponsorship, Exhibition & Advertising Opportunities: As part of the conference, a 3 day exhibition will also be held. This provides affiliate organisations with the opportunity to showcase products to psychologists and raise awareness of the services they offer. We also have a range of sponsorship packages and advertising options available. For more information contact the Conference Coordinator: conference@psychology.org.nz or download the [Sponsorship and Exhibition Brochure](#). For exhibitors, here are the [Terms and Conditions](#).



The New Zealand Association of Gerontology & Age Concern New Zealand Conference 2009



Living in an Ageing Society
SHAPING TOMORROW TODAY
7 – 9 October 2009 • Wellington

New Zealand Association of Gerontology &
Age Concern New Zealand Conference 2009

Age Concern
Serving the needs of older people

New Zealand Association of Gerontology
Te Kaitiaki Takekōwhiri Kōwhiriwhiri i te Kaitiaki

7th – 9th of October at the Wellington Convention Centre

Living in an Ageing Society: Shaping Tomorrow Today has been endorsed by The Royal New Zealand College of General Practitioners (RNZCGP) and has been approved for up to 15 hours (= 15 credits) CME for General Practice Education Programme Stage 2 (formerly AVE) and Maintenance of Professional Standards (MOPS) purposes.

TO VIEW ****PROGRAMME UPDATES****, **ALL ABSTRACTS** AND TO **REGISTER** CLICK [HERE](#) OR VISIT THE CONFERENCE WEBSITE AT www.confer.co.nz/ageing2009

If you have any questions, please don't hesitate to contact the Conference Manager at the numbers/email below.

Conferences & Events Ltd
Email: louise@confer.co.nz
Tel: +64 4 384 1511
Fax: +64 4 384 4667

7th Annual Scientific Conference - Brisbane 2010
February 10-12, 2010
Novotel Hotel
Brisbane, Qld, Australia



Track Themes

- The Challenge of Health Behaviour Change
- Achieving Equity: Determinants & Distribution of Health
- Linking Research, Policy and Practice
- Healthy and Unhealthy Behaviours
- Unhealthy Behaviours
- Chronic Disease Prevention and Management
- Intervention and Program Evaluation
- Quality of Life Issues
- Psychophysiology/Psychoneuroimmunology

For further information please go to the following link: <http://www.asbhm.org/conference.html>

Campus News on Staff Activities, Achievements, Awards, Appointments and Departures

Albany Arrivals and Departures

Anita Bellamy

Anita Bellamy has accepted our offer of a position as a senior professional clinician contributing to clinical training at the Auckland campus. Anita is currently in private practice and has joined us in early July.

News on Staff Activities, Achievements and Awards

Kerry Chamberlain and some others...

A strong contingent of Massey staff and students attended the 6th Biennial conference of the International Society for Critical Health Psychology (ISCHP) in Lausanne, Switzerland in July. This was the first bilingual meeting (French / English) for the society and was attended by more than 200 participants from 16 different countries around the world. The photo shows (left to right) Chris Stephens, Rachel Pond, Kerry Chamberlain, Antonia Lyons, Helen Madden and Helen Owens (absent Chez Leggat-Cook). Kerry had a very busy conference as Chair of ISCHP, involved in giving part of the welcome and closing addresses and running the biennial meeting of the society. He was heard to state that his two prior visits to Lausanne to assist with the organisation of this conference were "very necessary". In terms of presentations, the Massey group were very active and made the New Zealand presence very visible. Chris organised a symposium on Issues in Public and Community Health Psychology, where she presented a paper on the health promotion implications of maintaining privilege and status in an unequal society and Kerry talked about the constructed nature of ethnicity in health research. Kerry and Darrin Hodgetts organised a symposium on their research on homelessness, in which Kerry presented a paper on eating on the street and Chez presented on service providers' perspectives on home and homelessness. Antonia presented on masculinities, femininities and health behaviours, Rachel on middle-older aged adults' regulation of self in the pursuit of health and Helen Madden presented on the paradoxes of integrative medicine practice. The strong connection between the Massey health psychology group and ISCHP continues; although Kerry stood down as Chair and Antonia as Treasurer, Kerry continues on the Executive Committee and Chris joins the committee as Membership Secretary / Treasurer. It seems that the conference had only a minor effect on the Massey group's fluency in French. Dommage!

Albany



News on Staff Activities, Achievements and Awards

Anne Ormsby



Congratulations to Anne and Tahiwī on the early arrival of their baby son, Shaye Tahiwī Tama Ormsby. He is still in the neo natal unit in Wellington and will be there until closer to his due date.



Kirsti Chapman

Congratulations to Kirsti Chapman and her partner Ady who are expecting their second baby in October this year.

Michael Donnelly

After a long wait Michael Donnelly's position has been re-graded. Michael's new job title is School of Psychology Resource Manager.

Natasha Tassell

The 11th European Congress of Psychology was held 7th-10th July in Oslo, Norway. It was well-attended by delegates from all over Europe and internationally and attracted a number of scholars influential to the discipline, including Phillip Zimbardo and Paul Costa. Natasha Tassell attended and presented with four other international scholars, as part of a symposium on the Universal Declaration of Ethical Principles for Psychologists. Her presentation centred on some of the cultural issues involved in creating a universal declaration, using examples from Māori culture to highlight her arguments.



Lisa Cherrington

Lisa Cherrington has been awarded a Derrick Ward Scholarship by the Cancer Society to attend and present a paper at the National Maori Cancer Maori Forum to be held in Rotorua in August.



Various Conferences

A large group from the School who work in areas of ageing and health have just returned from successful attendance at several conferences in Europe related to these topics.

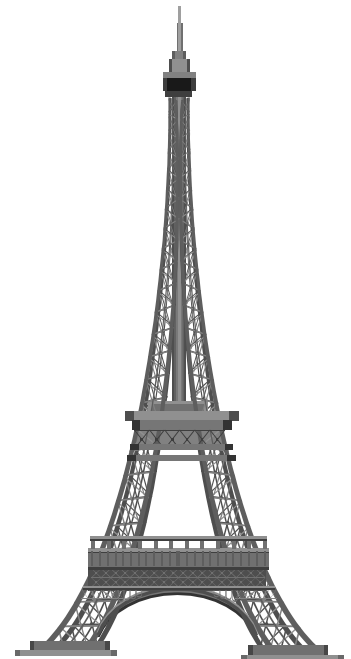
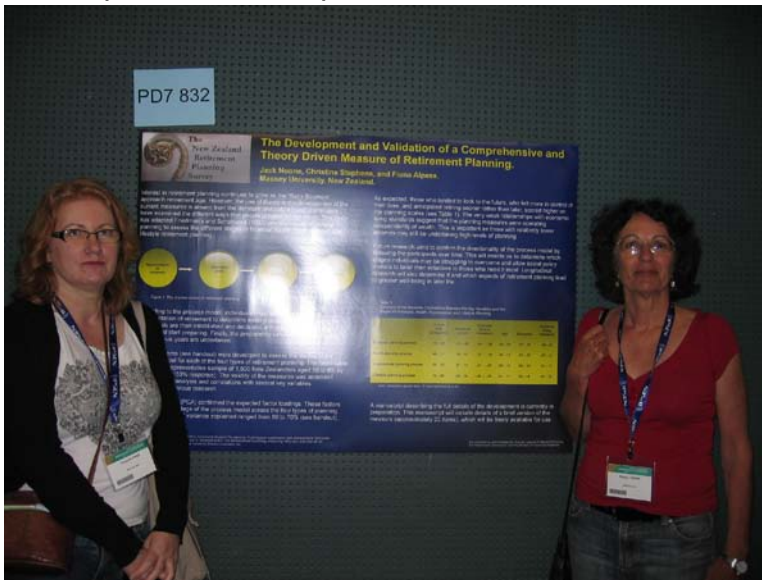
Rachael Pond

Rachael Pond presented her work at the Making Sense of Health and Illness Conference, Friday 3rd July - Sunday 5th July 2009 at Mansfield College, Oxford. At the same time and place Chris Stephens contributed to the 1st Global Conference Times of our Lives: Making Sense of Ageing.

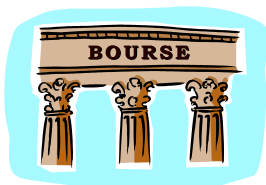


Here is Rachael at Christ's College and a picture of Mansfield College - where the conference was held

Fiona Alpass and Chris Stephens



Fiona Alpass presented her work on work and ageing at the International Association of Gerontology and Geriatrics World Congress in Paris from 6th -7th July 2009. She also presented posters by other members of HARG (Health and Ageing Research Group): Chris Stephens, Andy Towers and Jack Noone. The photo shows Fiona and Chris with Jack's poster. Robyn Tuohy who is a master's student in the School also presented her work at the Paris conference. The photo shows Robyn with her supervisor Chris. The photo further on shows all the New Zealand ageing researchers at the Paris conference.



Chris Stephens and some...



Several health psychologists from the School attended the International Society of Critical Health Psychology Conference in Lausanne Switzerland from 8th – 11th July, 2009, to chair symposia, present papers and contribute to the development of the Society. They



include Kerry Chamberlain, Helen Madden, Antonia Lyons, Chris Stephens, Rachael Pond and Chez Leggat-Cook. Refer to the photo earlier in the newsletter.



On the way to these meetings Chris also met with Patrick Dulin, a past School member and present collaborator on the New Zealand Longitudinal Study of Ageing, at the University of Alaska in Anchorage. The photos show Chris and Patrick hard at work on the way to the University and in Patrick's office.



Palmerston North Clinic Friday Night Fever.....

In the past we have had many challenges, from dress-up petanque, to baking with blind voting, costumed petanque, minigolf etc but in July we graduated to Legends - performing a Disco dance in costume with a live audience. This was the hardest of our regular Staff / Student challenges so far.

Sarah probably ended up being our team captain by a process of elimination. We started with a demo of "I love the Nightlife" by Jo Berrett and this ignominious start was captured on DVD and (reluctantly) shared with the students. (First few CD's the students copied only had music....? oops) Featuring Don Baken colliding with Anita Darrah.

Then followed many lunchtime clandestine meetings in the student room, which busted out to various venues, interspersed with derogatory remarks from both sides and misleading suggestions and much hilarity. On Friday night 10th July, we met at Malba's bar with the intention of using their side room in privacy for the Big Dance-Off. Unfortunately for the less extroverted of us, the bar staff had made a mix-up and we had to "perform" in front of the regular patrons. In the end, this added to the spectacle, as we first danced together as a warm-up, then as teams, to cat-calls, whistles and cheering from both sides. Each team gave a well-rehearsed and energetic version of the disco dance and egged on by Cheryl, Joan, staff and families, any shyness or lack of training (or talent!) was overcome. Judged by Jo Berrett:-

The individual winners were Craig Colhoun for most "into it", energy and joy (that just means he wiggled the most!) Liz Yan won a well deserved prize for best costume (she made the sparkly red pants), the student team were so well dressed, sparkle makeup, guys in white pants with the sparkle inserts and all the ladies to suit, special mention to Sarah Yee with the short afro and black & gold - Donna Summer eat yer heart out! They arrived in a combi-van!

Don Baken was awarded for "most out of his comfort zone" (he did a fantastic rendition of Neil Diamond outfit with an "Annie" wig - what?) but the overall award went....wait for it....to the STAFF-yahoo!

We all decided it was fabulous exercise and entertainment and wish it was part of the curriculum.

Next challenge is a make and model (Junk) - there's got to be some great photos out of that. The toner cartridge packing gave me an idea for a cod-piece, but I wonder who would be prepared to model it???.....hmmmm



Wellington Arrivals and Departures

Duncan Babbage

Dr Duncan Babbage has accepted an offer from the School for the Senior Lecturer (Clinical) position at Wellington campus. He will retain the position of Acting Clinical Director until a new one is appointed.

Emma Doyle

Congratulations to Emma Doyle whose FRST postdoctoral application "Effective integration of science into emergency decision-making processes" was successful. Emma will be joining the School in Wellington where she will complete her study in the Joint Centre for Disaster Research from February next year.

Ian deTerte

I'm pleased to announce that Mr Ian deTerte has accepted a position as senior professional clinician on the clinical training team at the Wellington campus. Ian will be starting on Monday August 31.

News on Staff Activities, Achievements and Awards

Linda Jones

Congratulations to Linda Jones who has been successful in obtaining a research grant in Round 1 of the 2009-10 Bilateral Research Activities Program of the Royal Society of New Zealand - Te Aparangi for the Dental Jungle project.

Linda has also been re-elected as the Stress and Anxiety Research Society (STAR NZ) national representative for another year. Here's a photo of Linda and a naked male



during her dental jungle presentation at STAR in Budapest. It's at the Semmelweis University, Faculty



of Physical Education and Sport. They had statues in all the lecture rooms! The other remarkable thing that Linda mentions about the university is that they had handprints (or footprints if more appropriate) and photos of all the Olympic athletes that had been students there. That's a sample from one wall in the main lecture theatre. There were hundreds of others.

The Stress and Anxiety Research Society (STAR) is a multidisciplinary, international organisation of researchers who share an interest in problems of stress, coping, and anxiety. You can find out more about STAR by going to the following link: <http://www.star-society.org/>

Also while overseas, Linda worked at Nottingham University (pictures below) with Dr Heather Buchanan



where they wrote and submitted a paper on the validation of the Smiley Faces Program in New Zealand and Linda attended the Design and Health bi-annual meeting in Singapore. This is an exciting interdisciplinary meeting where health facility architects are the largest group (presenting hospital and various types of clinic designs) with strong support from materials designers, landscape architects and social scientists. Linda is on the Editorial Advisory Board of the group's journal *World Health Design*. Information about this can be found at the following link: The International Academy for Design and Health <http://www.designandhealth.com/>

Linda also has a New Zealand Royal Society Bilateral Research Activities Programme Award to initiate a research collaboration with Professor Marie-Therese Hosey, Head of Pediatric Dentistry at Kings College, London. The project title is *Managing children's dental anxiety: A Practitioners' Manual to accompany Dental Jungle*. So the Dental Jungle work continues. She will travel in November this year to work with Professor Hosey at Kings.

Duncan Babbage

Congratulations to Duncan who received the AUT National Research Centre for Stroke, Applied Neurosciences & Neurorehabilitation, award for the best presentation at the conference. The paper for which Duncan won the award was a meta-analysis of facial affect recognition difficulties after TBI. More information can be found about the Centre on the following link: <http://www.nrc-sann.aut.ac.nz/>



Research Matters

Research Activity

Research Update from the Joint Centre of Disaster Research



"Classroom in the Coach" – participants on the Summer Institutes field trip

The Centre held its annual Summer Institute on Emergency Management at the Wellington campus during 16th – 20th March 2009. This short course programme has been developed to

provide a theoretical and practical introduction to selected topics relating to emergency management. Each course begins with an introduction and review of New Zealand and international research and practice. The topics were to be explored through a series of relevant case studies. The final session of each module provides a practical tools and guidance for turning the 'theory to practice'. Next year's Summer Institute is set for 15th 19th March 2010.

World Social Science Forum

Eight New Zealanders attended the World Social Science Forum in Bergen (May 10-12th 2009) – three associated with the Centre (Lesley Patterson, Caroline Orcheston (in the centre of the photo below) and David Johnston).



- The latest Research Update (June) from the JCDR is now available from http://disasters.massey.ac.nz/pubs/JCDR_Update_June_2009.pdf

The JCDR has a new website if you wish to explore further: <http://disasters.massey.ac.nz/news.htm>

Staff and Student Publications

Journal Articles

- Chamberlain, K. (In press). Situer le social dans la psychologie de la santé : Réflexions critiques [Locating the social in health psychology: Critical reflections]. *Cahiers Internationaux de Psychologie Sociale*.
- Hodgetts, D., Stolte, O., Chamberlain, K., Radley, A., Groot, S., Nikora, L., & Nabalarua, E. (In press) The mobile hermit and the city: Considering links between places, objects, and identities in social psychological research on homelessness. *British Journal of Social Psychology*.
- Kaptein, A.A. & Lyons, A.C. (2009). The doctor, the breath, and Thomas Bernhard: Using novels in health psychology. *Journal of Health Psychology, 14*(2), 161-170.
- Kazantzis, N., Calvert, S. J., Orlinsky, D. E., Rooke, S., Ronan, K., & Merrick, P. (2009). Activities influencing the professional development of New Zealand counsellors across their careers. *New Zealand Journal of Counselling 2009, 29*(1), 73-96.
- Lyons, A. C. (2009). Masculinities, femininities, behaviour and health. *Social and Personality Psychology Compass, 3-4*, 394-412.
- Lyons, A. C. & Cromby, J. (In press). Social psychology and the empirical body: Rethinking the relationship. *Social and Personality Psychology Compass*.
- Lyons, A. C. & Willott, S.A. (2008). Alcohol consumption, gender identities and women's changing social positions. *Sex Roles, 59*, 694-712
- Madden, H. & Chamberlain, K. (in press). Nutritional health, subjectivity and resistance: Women's accounts of dietary practices. *Health: An Interdisciplinary Journal for the Social Study of Health, Illness and Medicine*.
- Mortimer, R. C., Craven, G. M., Woolley, C. C., Campbell, J., Harvey, S. T., Taylor, J. E., & Dickson, J. (2009). Survey of practitioners providing therapy for survivors of sexual abuse/assault in Aotearoa/New Zealand. *New Zealand Journal of Counselling 2009, 29*(1), 54-72.
- Taylor, J. E., & Harvey, S. T. (2009). Effects of psychotherapy with people who have been sexually assaulted: A meta-analysis. *Aggression and Violent Behavior, 14*(5), 273-285.
- Vroman, K., Warner, R., & Chamberlain, K. (In press). "Now let me tell you in my own words": Narratives of acute and chronic low back pain. *Disability and Rehabilitation*.
- Vroman, K., Chamberlain, K., & Warner, R. (2009). A Personal Projects Analysis: Examining adaptation to low back pain. *Journal of Health Psychology, 14*, 698-708.

Chapter in a book

- Chamberlain, K. & Murray, M. (2009). Critical health psychology. In Fox, D., Prilleltensky, I., & Austen, S. (Eds.), *Critical psychology: An introduction* (2nd ed) (pp. 144-158). London: Sage.
- Bürgelt, P. T., Morgan, M., & Pernice, R. (2009). *Is Aotearoa/New Zealand the right choice?* Saarbrücken, Germany: VDM Verlag Dr. Müller.



Conferences/Workshops

- Chamberlain, K. (2009, April). Reflections on the construction of knowledge in psychology: Some comments on how we do things around here. Invited Keynote Address to the *British Psychological Society Annual Conference*, Brighton, UK
- Chamberlain, K. (2009, May). A pill for every ill? The social meanings of medications in society today. Presentation in the *Professorial Lecture Series*, Massey University, Albany
- Chamberlain, K., Leggatt-Cook, C., Hodgetts, D., Stolte, O. & Radley, A. (2009, July). Eating on the street: Food and social relations in homelessness. Presented to the *6th Conference of the International Society for Critical Health Psychology*, Lausanne, Switzerland.
- Groot, S., Hodgetts, D., Chamberlain, K., Stolte, O., Radley, A., & Nikora, L. (2009, July). What does it mean to try again?: Efforts to leave the street. Presented to the *6th Conference of the International Society for Critical Health Psychology*, Lausanne, Switzerland.
- Hepworth, J., Chamberlain, K., & Langjit, G. (2009, July). The constructed nature of ethnicity in health research. Presented to the *6th Conference of the International Society for Critical Health Psychology*, Lausanne, Switzerland.
- Hodgetts, D., Chamberlain, K., Stolte, O., Radley, A., & Nikora, L. (2009, July). Being healthy in an unhealthy environment: Homelessness in context. Presented to the *6th Conference of the International Society for Critical Health Psychology*, Lausanne, Switzerland.
- Jones, L. (2009, July). *Genetic influences - early behavioral experiences. Validation of the Smiley Faces Program for assessing children's dental anxiety in New Zealand*. International Society for Stress and Anxiety Research (STAR) meeting, Budapest, Turkey
- Jones, L. (2009, July). *Anxiety in different settings. Dental Jungle: developing a computer game to reduce children's dental anxiety*. International Society for Stress and Anxiety Research (STAR) meeting, Budapest, Turkey
- Leggatt-Cook, C., Chamberlain, K., Stolte, O. & Hodgetts, D. (2009, July). Service providers' perspectives on home and homelessness: implications for service delivery and advocacy. Presented to the *6th Conference of the International Society for Critical Health Psychology*, Lausanne, Switzerland.
- Madden, H. (2009, July). *Integrative medicine: Paradoxes for a contested practice*. Presented to the 6th Biennial Conference of the International Society for Critical Health Psychology, Lausanne, Switzerland.
- Schneider, B., Chamberlain, K., & Hodgetts, D. (2009, July). Social problem or social change: representations of homelessness in three Canadian newspapers. Presented to the *6th Conference of the International Society for Critical Health Psychology*, Lausanne, Switzerland.
- Tassell, N., & Lock, A. (2009, July 7th - 10th). *Te tirohanga ahurea hei whakatakato tika, whakapakari te aro ki te tangata: Te ahua ki Aotearoa. Cultural considerations for professional psychology ethics: An Aotearoa/New Zealand perspective*. The 11th European Congress of Psychology, Oslo, Norway.

Other publications

Australasian Journal of Disaster and Trauma Studies

Volume 2009-1 of the journal has been published with the contents page listed as below. This issue can also be linked to via the Current Issue link of the Journal's home page at URL: <http://trauma.massey.ac.nz/>

The contents page of Volume 2009-1, as listed below with abstracts and clickable links, can be found at URL: <http://trauma.massey.ac.nz/issues/2009-1/contents.htm>

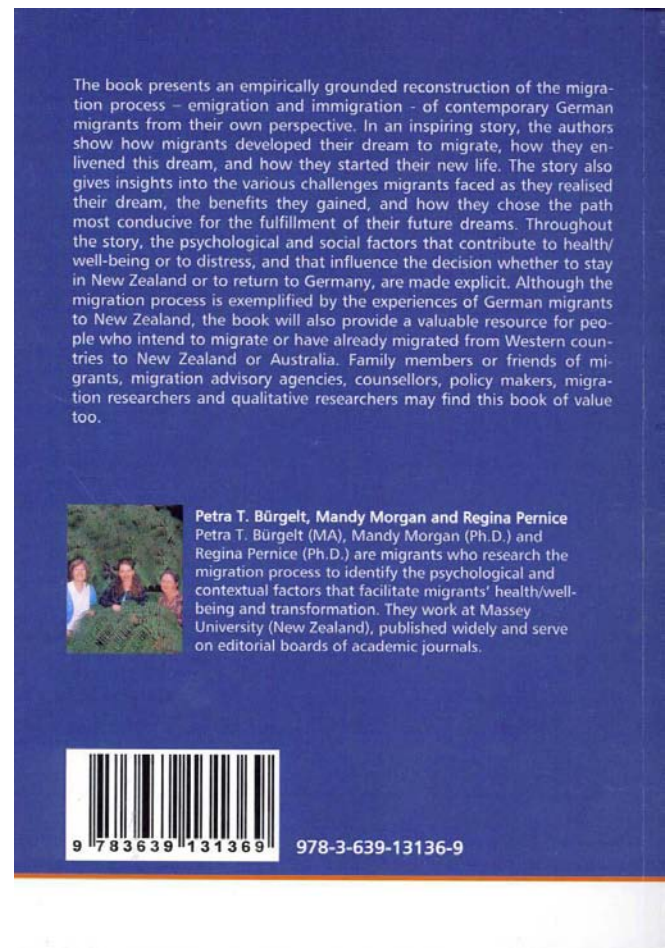
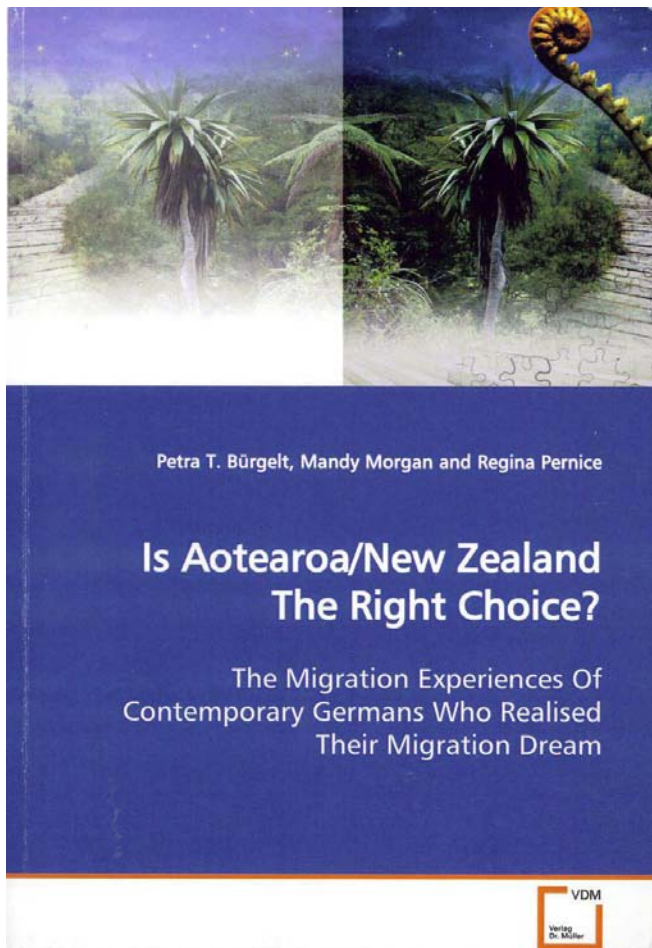
The contents page of Volume 2008-2, is also listed below with abstracts and clickable links, and can be found at URL: <http://trauma.massey.ac.nz/issues/2008-2/contents.htm>

This issue was focused on "Fire Risk Communication & Preparedness" and was not advertised via this list due to time constraints in Dec 2008, but was particularly relevant to the destructive processes of the Australian bushfires of January 2009.

The issues published 1997-1 through 2008-2 can be obtained from the home page link to "Previous Issues".
URL: <http://trauma.massey.ac.nz/issues/previous.shtml>

*Is Aotearoa/New Zealand the Right Choice?
The Migration Experiences of Contemporary Germans who Realised Their
Migration Dream*

Migration process, migration experiences, psychosocial factors, Germany, New Zealand, qualitative research



IMPORTANT! Please send information about in press or published research to H.L.Page@massey.ac.nz. We will include research outputs information that you forward to Melanie Robertson. However, since outputs information does not include in press or in preparation research we'd still like you to keep us updated directly about such material.

Please let Melanie Robertson know if you do not wish your outputs to be released in the Psychology News.

Student Activities, Achievements, and Awards

Notes from the Doctoral Coordinator

Each issue A/P Keith Tuffin, the School of Psychology's Doctoral Coordinator, keeps us up-to-date with Doctoral news.

Notes from the Doctoral Coordinator. (June 2009 – July 2009)

Graduate Profile – Dr Angela Jury



We see Dr Ross Flett here with Dr Angela Jury

For your PhD what did you study and what did you find out?

My PhD looked at dietary modification among men. Half the men surveyed were in the action or maintenance stages for fruit and vegetable intake and eating 5 or more servings a day. Men who had greater intentions of eating 5+ a day in the future had more people around them who ate a healthy diet and expected others to do so also. Self-efficacy was also an important predictor of behaviour, especially in food insecure households.

What was the best part of doing a doctoral thesis?

Learning! I really enjoyed learning more about the process of undertaking research, having an opportunity to develop new skills and a better understanding of health psychology. One of the most rewarding parts was receiving back completed questionnaires that people took time to fill in and their impromptu comments.

What was the most difficult aspect of completing your doctorate?

The isolation that comes with studying at a distance and not having a supervisor close by. Making sense of factor

analysis was also a challenge. It's much easier to talk about things with others when you have some idea of what you are talking about.

There is often much mystique around the PhD oral – could you tell us about your experience

I found a couple of good books that provided a little bit of insight into the process beforehand. One strategy I found useful in preparing was writing a one line summary of key points for each page. But what I took from my experience was the value of putting effort into writing your thesis and including your rationale there. I think it ended up making the process a lot easier for me.

What advice would you offer those thinking of embarking on doctoral study in psychology?

When embarking on doctoral study I think you need to consider whether it is the right time for you as you are committing several years at least. I would also recommend making use of the resources available; courses, training and opportunities to meet with other students. Write simply and clearly and be aware that it will probably take awhile before everything seems to make sense to you.

You chose to formally graduate in May this year – is that something you would encourage others to do?

I have some great memories from my last graduation in Palmerston North. While I'm not too much of a fan of standing up in front of everyone, it is a way for me to acknowledge and show my respect to the people who have helped me get here. I feel very fortunate and privileged to have had Dr Ross Flett as my supervisor again. I think formally graduating will also make it all feel more 'real'.

What are you doing now that you have completed your PhD?

I'm working as a researcher for Te Pou, which is one of the four national workforce centres for mental health and addiction. Part of my role is looking at what research is being undertaken in New Zealand to identify strengths and potential directions for future research. So I'm now enjoying finding out what other people have been doing.

Where would you like to be working in 2 -3 years time?

I'd still love to be learning and undertaking research, and having the opportunity to gain more practical skills. Ideally a role that involves early intervention and promotion for children, young people and at risk groups.

Doctoral Confirmation Events

Congratulations to ...

Congratulations to Colette Nixon, Margo - Ann Munro, and Uvonne Callan-Bartkiw who successfully completed their confirmation events and have had their doctoral enrolments confirmed. Confirmation events continue to provide each campus with regular seminars where the doctoral students present to staff and students. These events are an important milestone in the doctoral journey and it is great to see them being so well supported within the School.

New Doctoral Enrolments

New enrolments - we welcome the following doctoral students and wish them every success in their studies.

Ann Boston - June - Ann is working with Paul Merrick and Jennifer Stillman looking at health anxiety among older adults.

Jodi Field - May - Jodi is working with John Podd and Stephen Hill investigating differences in expressed emotion between depressed and non-depressed older adults.

Rachel Hallas - May - Rachel is working with Kerry Gibson and Bev Haarhoff looking at clients' experiences of therapy.

Craig Colhoun - May - Craig is working with Keith Tuffin and Jo Taylor. His research is looking at media suicide guidelines and suicide reporting in New Zealand.

Edwin Chin - February - Edwin is working with Mei Williams, Jo Taylor and Shane Harvey. His thesis topic is "Cultural comparisons of the link between patterns of attribution & coping behaviours towards mental illness".

Rochelle Lee

Congratulations to Rochelle Lee, who has received a NZ Federation of Graduate Women - North Shore Scholarship for her postgraduate studies.

Heather Heron

Congratulations to Heather Heron who is this year's recipient for the student award of the Psychological Society Central Districts Branch. Heather's award will allow her to be funded to present at the New Zealand Psychological Society Conference in August.

Congratulations to our most recent Scholarship winners;

Denise Blake, Vice Chancellor's Doctoral Scholarship

Angela Macfarlane, Doctoral Scholarship

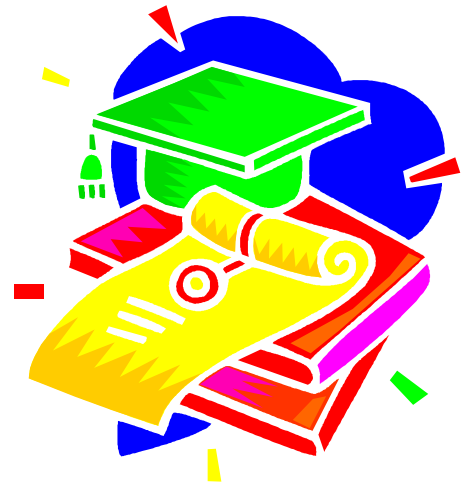
Ann Rogerson, Doctoral Scholarship

Anne Ryan, Doctoral Scholarship

Patricia Niland, Masterate Scholarship

Matthew Williams, Masterate Scholarship

Michelle Roestenburg, Maori Masterate Scholarship



We see here a photo of the Albany Campus.



People in the School of Psychology

Interview with Ying-Yue Zhao

Academic Administrator – Ying Yue Zhao Massey University



Q. You have just started as our new Academic Administrator in Albany. What attracted you to the position and what were you doing before starting here?

A. I was involved with the Massey University Students' Association for the last two years and I really enjoyed helping students out whenever I could. I guess the Academic Administrator/Advisor position appealed to me because I still get to interact with students as well as work for the School of Psychology.

Q. Tell us about your background in psychology - where did you study? What aspects of psychology interest you? Do you have a background in any other disciplines or professions?

A. I completed my Bachelor of Arts in Psychology and Philosophy in 2006 (Palmerston North). The real question is: what aspects of psychology does not interest me! Had I known the answer to that question, I think I would be doing postgrad right now. Like my degree suggests I also have a Philosophy major which is a bit misleading because I am not a philosopher (if only). I like the overlap between Psychology and Philosophy like the theory of mind and consciousness.

Q. What would you like to do in the Academic Advisor position? How do you see your role developing?

A. I think the core business of my job is probably always going to stay the same. I think my role will develop depending on the needs of the students coming in and as well as the needs of the school.

Q. What is your favourite thing about your work?

A. I'm going to be a bit cheesy and say the whole package – the work environment and the people. I also enjoy being able watch Pukeko chase each other from my balcony.

Q. Do you have any interesting quirks or hobbies that we should know about?

A. I love to paint, shop and play team sports. I'm one of the only people I know who does not like listening to music.

Q. What's your favourite book?

A. The Power of One by Bryce Courtney.

Q. What is the last movie you saw?

A. Ghosts of girlfriends past. It was pretty bad but I laughed anyway.

Q. Favourite food?

A. Real Italian food or Mum's cooking.



Next Issue

An editorial note: I did not have a lot of news to share, so please feel free to inform me of any news you have for the next newsletter.

The next issue (Vol 4, No 4, Aug / Sept) of *Psychology News* will be produced in late Sept. If you have any news, or fabulous photos, or research and publication information that you would like to contribute to the newsletter, please send the information to Helen Page, H.L.Page@massey.ac.nz before the end of July.

Editor: Stephen Hill

Co-Editor: Helen Page

Technical Support: Harvey Jones