



CAMPUS REVITALISATION

Reimagining our Spaces

So bright minds can
collide

Report on the Pukeahu session
held 25 September 2024

Final report
6 November 2024

Executive summary

Reimagining our Spaces

Campus Revitalisation



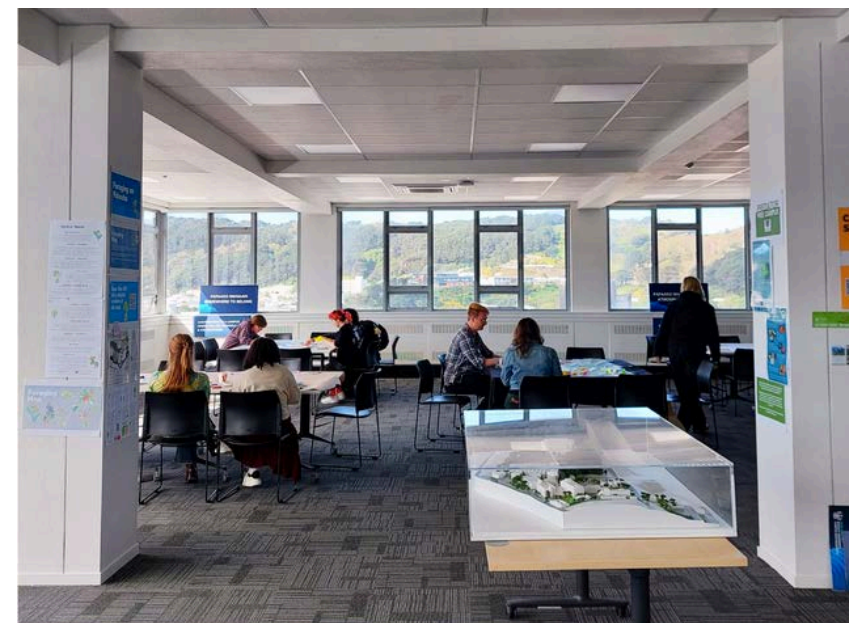

**HAVE YOUR SAY
MASSEY UNIVERSITY
CAMPUS REVITALISATION**




**HAVE YOUR SAY
MASSEY UNIVERSITY
CAMPUS REVITALISATION**




**HAVE YOUR SAY
MASSEY UNIVERSITY
CAMPUS REVITALISATION**




**HAVE YOUR SAY
MASSEY UNIVERSITY
CAMPUS REVITALISATION**

This report provides an overview of the key themes from feedback gathered during the Reimagining the Future for our Campus drop-in session that was held on the Pukeahu | Wellington campus on 25 September 2024.

The workshop focused on reimagining the Pukeahu campus and attendees were encouraged to share their thoughts and ideas.

Report contents:

- 3 Key themes from the four main stations
- 4 How we're feeling about Pukeahu campus
- 5 Papaako Whakahoahoa | Atmosphere and Vibes
- 6 Papaako Haumarū | Places and Spaces
- 7 Papaako Tūhono | Connected Campuses
- 8 Papaako Manaaki | Somewhere to Belong
- 9 Honouring Te Tiriti o Waitangi and Creating a Campus Heart
- 10 Pyramid and Block 10
- 11 Tussock and Student Lounge
- 12 Next steps

This report was prepared by the Sustainability, Policy and Comms team, within Estates Management, University Services.

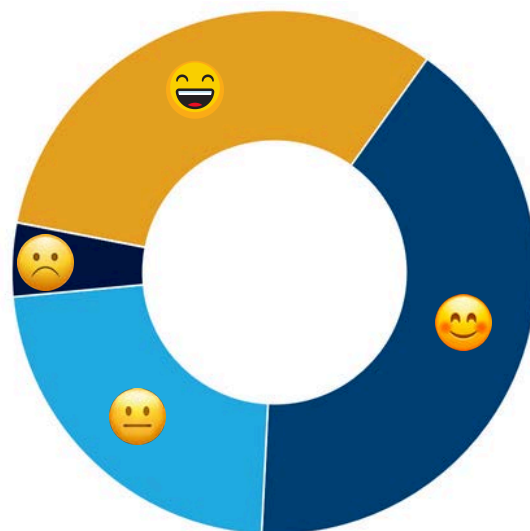
Key themes from the four main workshop stations

Reimagining our Spaces Campus Revitalisation

103* session attendees
62 students
41 staff

1,000+ pieces of feedback from session attendees

73% of poll respondents are feeling positive about Massey's work to reimagine the future for our campus
Based on 22 poll respondents



*103 attendees signed in, there will have been others who did not sign in.

**Feedback included A3 templates that contained various prompts for workshop attendees; Post-it notes gathered from the stations and campus maps; drawings; and sentiments from emotion cards.

Papaako Whakahoahoa Atmosphere and Vibes

- More events and activities
- More art displayed on campus
- Allow animals on campus, especially dogs
- Create a distinctive Massey entrance sign

Papaako Haumaruru Places and Spaces

- Improve dedicated spaces, e.g., study, socialising, and creative spaces
- Various requests for sustainability-related actions
- Better signage, wayfinding, entrances, and paths
- Build full service Recreation Centre
- Improve cleaning and maintenance

Papaako Tūhono Connected Campuses

- More food outlets and better food options
- Develop retail outlets on campus
- Campus bar/pub
- Comments about accommodation

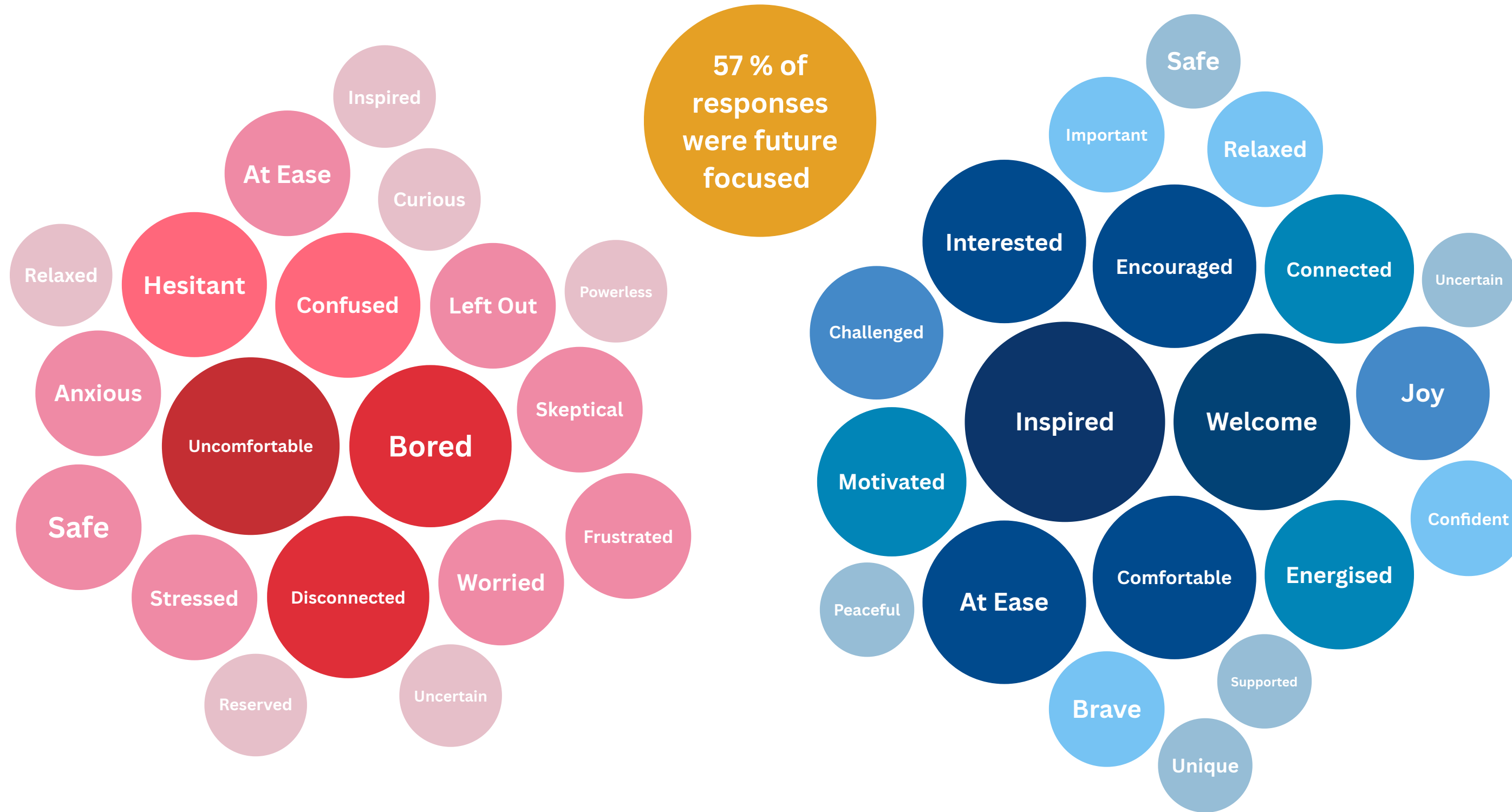
Papaako Manaaki Somewhere to belong

- Enhanced security
- Ensure the campus is accessible
- Requests for more student pastoral care

How we're feeling about Pukeahu campus

How staff and students are feeling **now**

How they would like to feel in the future



*We received 171 responses about current sentiments and future hopes on a wall display of the 'Customer Service' edition of the Riders & Elephants Emotional Culture Deck (with thanks to Campus Co-Lab). This chart shows emotions that were marked two or more times.

Papaako Whakahoahoa

Reimagining our Spaces

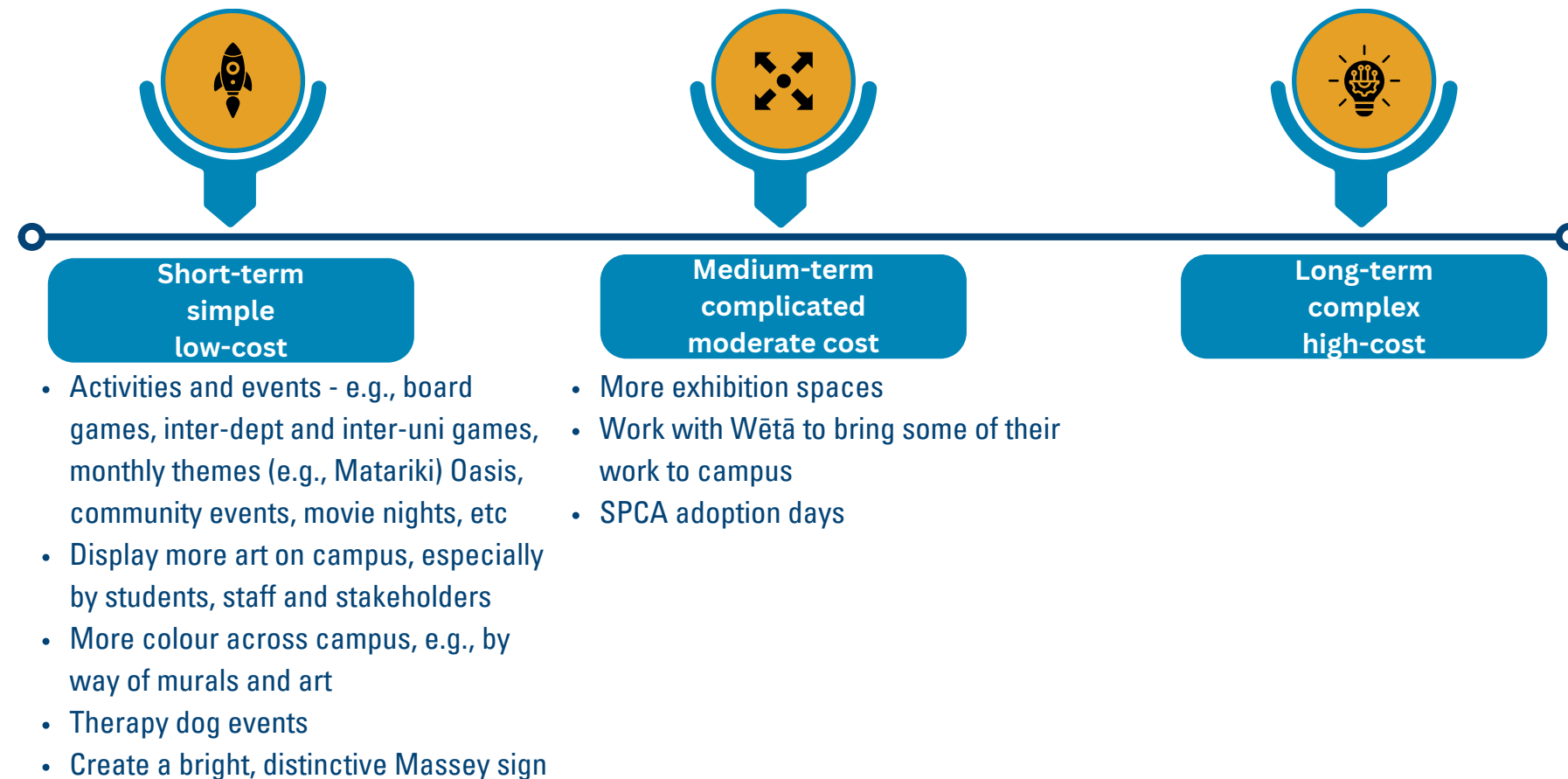
Atmosphere and Vibes




 Making the campus a place you want to be
 Permanent spaces for student-led activities - music, markets, talks, soapboxes, art exhibitions.
 How do we know we've arrived on campus? Something to say "we're here"! Something to be proud of.

Session participants suggested various opportunities to revitalise the campus

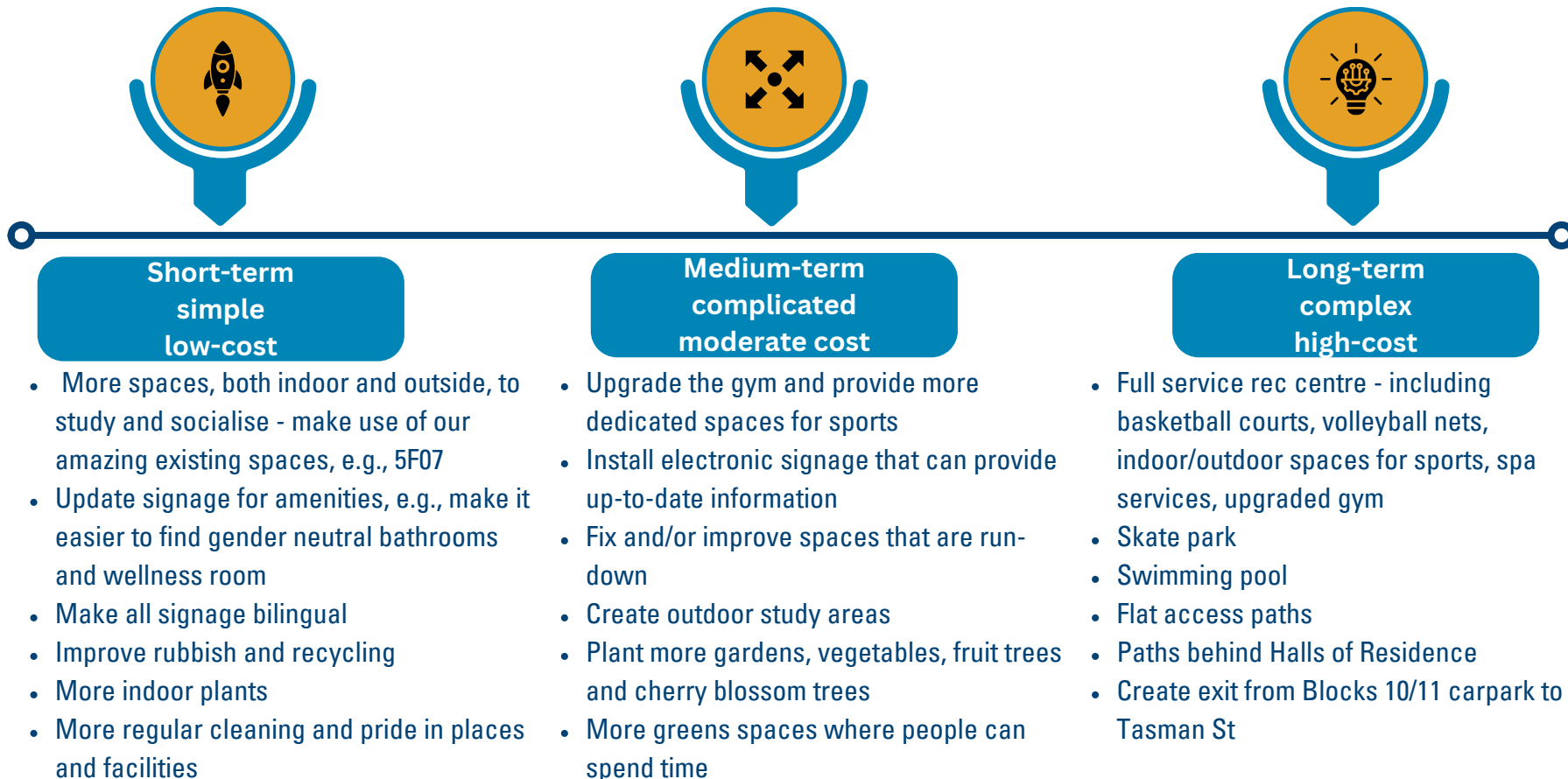
Below is a selection of these opportunities categorised by how long they might take to achieve, their complexity, and how costly they might be. The university will consider what to progress and when. Decisions will be communicated to students, staff, and stakeholders in due course.





Session participants suggested various opportunities to revitalise the campus

Below is a selection of these opportunities categorised by how long they might take to achieve, their complexity, and how costly they might be. The university will consider what to progress and when. Decisions will be communicated to students, staff, and stakeholders in due course.



Papaako Haumaru Places and Spaces



Designing a campus that protects Te Taiao and helps you thrive

Need cleaner facilities- everything's gross & dusty & dirty.

For a design campus...everything is so badly designed.

[Create] a campus that facilitates better relationships between different disciplines.



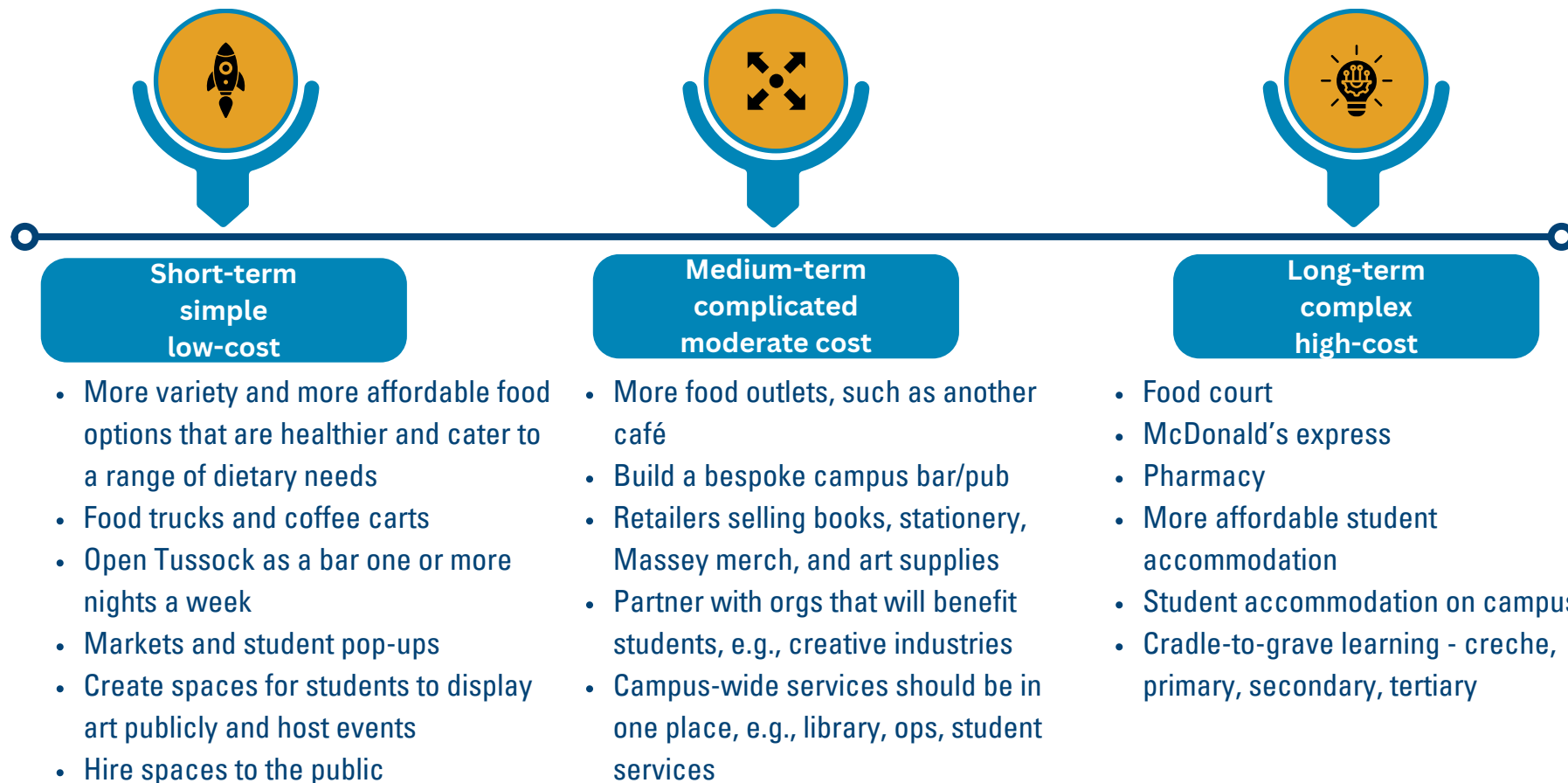
Reimagining our Spaces

Campus Revitalisation



Session participants suggested various opportunities to revitalise the campus

Below is a selection of these opportunities categorised by how long they might take to achieve, their complexity, and how costly they might be. The university will consider what to progress and when. Decisions will be communicated to students, staff, and stakeholders in due course.



Papaako Tūhono Connected Campuses

Growing into a liveable precinct and diverse neighbourhood



Access to better, healthier food (fresh fruit and veges etc.)

MAKE KAI ACCESSIBLE!



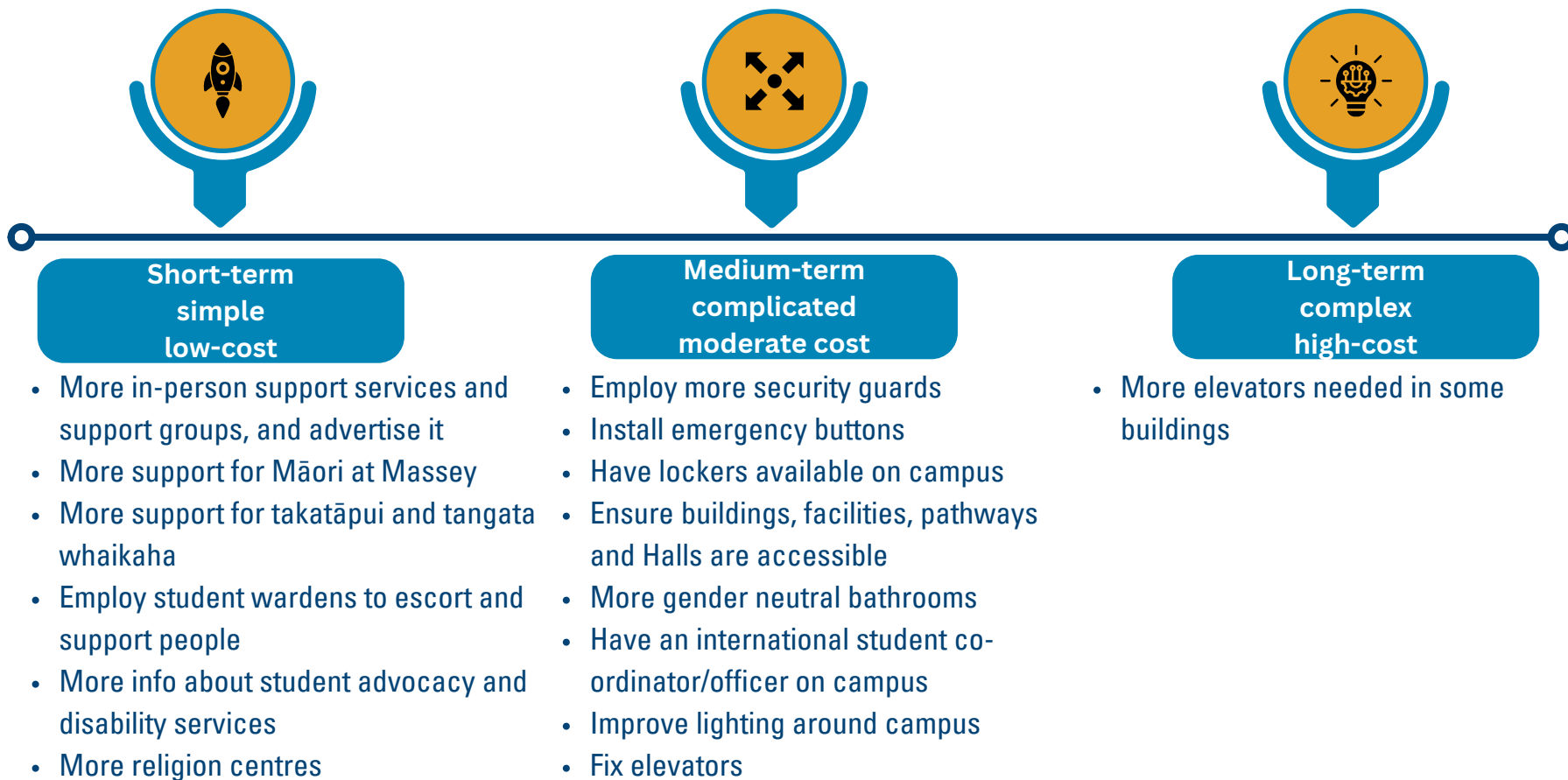
Reimagining our Spaces

Campus Revitalisation



Session participants suggested various opportunities to revitalise the campus

Below is a selection of these opportunities categorised by how long they might take to achieve, their complexity, and how costly they might be. The university will consider what to progress and when. Decisions will be communicated to students, staff, and stakeholders in due course.



Papaako Manaaki

Somewhere to Belong



Contributing to a campus where you see yourself and are nurtured

Build the experience around the student (life, study, etc.)



Reimagining our Spaces

Campus Revitalisation

Honouring Te Tiriti o Waitangi

Creating a campus Heart



Short-term
simple
low-cost

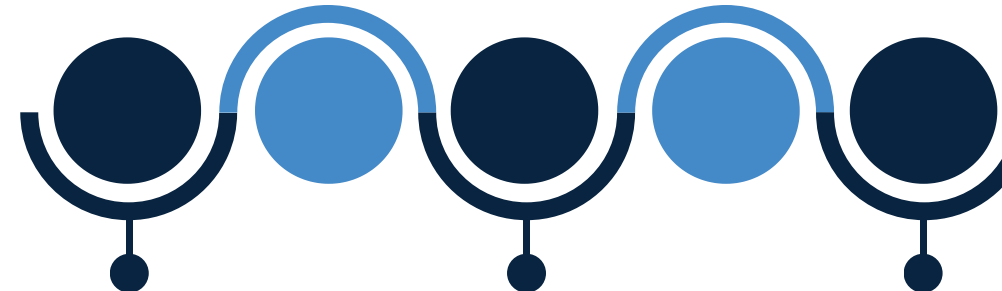
Medium-term
complicated
moderate cost

- Bilingual signage
- Celebrate Māori language week, Waitangi Day, Matariki etc. as a whole, uni-wide
- More history about Pukeahu and iwi visible on campus
- Make Te Tiriti more evident on campus
- Leave Toitu Te Tiriti stencil art uncovered

- Dedicated Māori leadership on campus
- Improved partnerships with iwi
- Connect with mana whenua - discuss scholarships with Taranaki Whānui
- Puna Reo (kaupapa Māori education and care services) on campus
- ECE that is affordable
- Integrate into all courses
- More financial support

"Rename blocks to honour the iwi whose land we sit on."

"Properly manaaki-ing our community with space, support, facilities & hospitality."



Short-term
simple
low-cost

Medium-term
complicated
moderate cost

Long-term
complex
high-cost

- Create a campus heart
- Make the marae the centre
- Make the space outside the marae and Tussock an open space where students can hang out and where their voice can be heard
- More events

- Improve food options and communal spaces, so it is somewhere people will like to congregate

- Create a hub (like Victoria University Wellington)

"Create a hub/entrance that centralises Te Rau Karamu (the most beautiful building on campus shouldn't be next to a carpark!)"

"[Create] a central hub for collaboration/meeting/hanging out (VUW's The Hub is an excellent example of a space like this)"

Pyramid



**Short-term
simple
low-cost**

- Make it more vibrant, e.g., by displaying art installations created by students
- Bring it back to life, we could have: fairy lights, soft seating, coffee and food, markets, and better wayfinding
- More greenery
- Clean it

**Medium-term
complicated
moderate cost**

- Make Pyramid bathrooms accessible
- Carpet/cover floor
- Move Estates to ground floor Block 5/Pyramid space, so they are obvious and accessible
- Put service desks in the Pyramid

**Long-term
complex
high-cost**

- Fix the leaks/replace the roof
- Replace the Pyramid with something that brings us all together, e.g., a campus shop/creative market, maybe something student-led

"Plants to catch drips in the Pyramid."

"Cleanliness/maintenance is key - shows people that you appreciate and respect our place. This is not happening. It's neglected, dirty (when were the floors in the Pyramid & lift area last cleaned?)"

Block 10



**Short-term
simple
low-cost**

- Bring in coffee carts or food trucks nearby
- Improve signage for wayfinding
- Paint path connecting to rest of campus
- Student lounge space

**Medium-term
complicated
moderate cost**

- Make courtyard a green student hangout space
- Have a café area, with student-friendly prices
- More study spaces, like those in the library
- Outdoor study spaces

**Long-term
complex
high-cost**

- Build a better connection between Block 10 and the rest of the campus, e.g., covered walkway, green, attractive, safer, better flow, interesting info along the way
- Sell - it's crumbling and the university is losing money

"Better connection between Block 10 and the rest of the campus - ideally all university would be more centralised."

"I love Block 10!"
"Get rid of Block 10, it is crumbling."
"Sell Block 10 - losing big \$"

Tussock



Short-term
simple
low-cost

- Make Tussock more affordable
- Increase healthier food options, including options that cater to different dietary needs
- Hold Friday drinks for staff and students
- Have live bands/gigs after 4pm outside Tussock
- Revitalise and encourage vibrancy
- Have reusable cups
- Offer picnic blankets

Medium-term
complicated
moderate cost

- Tussock needs more budget, so they are able to employ more staff and cook food from a menu
- Subsidise, so they are able to offer students and staff a percentage off their purchases

"Food options that are not all yellow in colour!"

"Revitalise Tussock as social heart of campus- better food/ more selection/ variety, not priced out of reach of staff, let alone students!"

Student Lounge



Short-term
simple
low-cost

- Create a better student lounge space that has more sunlight and nicer seating
- More greenery
- Beanbags
- More breakaway seating

Medium-term
complicated
moderate cost

- Mixed seating options (tables and chair, armchairs, couches, beanbags), with distinct areas divided by shelving, rugs etc, pool tables, screens, laptops

"[Create] cosy spaces in between the quietness of the library and the busyness of Tussock - places to chill with friends etc."

"Third Spaces that students/staff can access outside of the 9-5... makes the campus feel vibrant and safe in the evening."

The Pukeahu drop-in session yielded a vast array of ideas about how to revitalise the campus to create a vibrant, diverse, and inspiring environment.

Recent times have been challenging and yet the feedback gathered from the session was largely positive, future-focused and constructive. It's clear that our people want to see Te Kūnenga ki Pūrehuroa Massey University flourish.

Work is now underway to consider which ideas to progress and when. While this work is being developed, more consideration can be given to longer-term campus planning.

Ngā mihi nui to all of you who shared your thoughts and feelings.

You have been heard.

**NĀU TE ROUROU,
NĀKU TE ROUROU, KA
ORA AI TE IWI**

With your food basket and my food basket the people will thrive

